



**DIRECTORATE OF INVESTIGATIONS AND ASSET  
TRACING**

## MONTHLY REPORT, FEBRUARY 2008

### Introduction

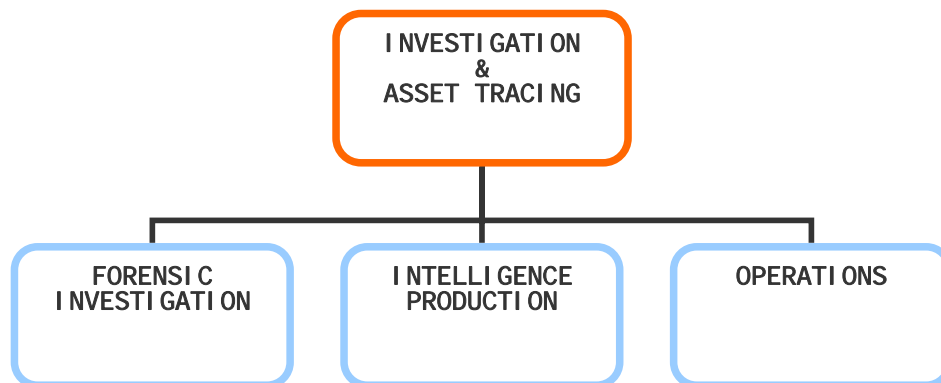
The Directorate of Investigation and Asset Tracing is one of the four Directorates of the Kenya Anti-Corruption Commission. The functions of the Directorate include:

- Investigate Corruption and Economic Crimes as stipulated in the Anti-Corruption and Economic Crimes Act (2003).
- Investigate the extent of liability, loss or damage to any public property for purposes of recovery or compensation,
- Investigate and trace the whereabouts of corruptly acquired assets for purposes of recovery.
- Assist any law enforcement agency in the country in investigation of corruption or economic crimes.

Effective February 2008, the Directorate has been reorganised into three departments, namely; Operations, Forensics and Intelligence.

- i. Operations- comprising two divisions; Report Centre and Rapid Response,
- ii. Forensics- comprising two divisions; Forensic Investigation and Asset Tracing,
- iii. Intelligence- comprising three divisions: Analysis & Production, Preliminary Investigation and Collection

### Structure of the Directorate



### Report Centre - Nairobi

During the month of **February 2008**, the Reports Centre Division processed **179** (new) reports. The number of reports received and processed further dropped by **24** when compared to the month of **January 2008** when a total of **203** new cases were handled in the division.

After analysis and classification the reports were disposed off follows:

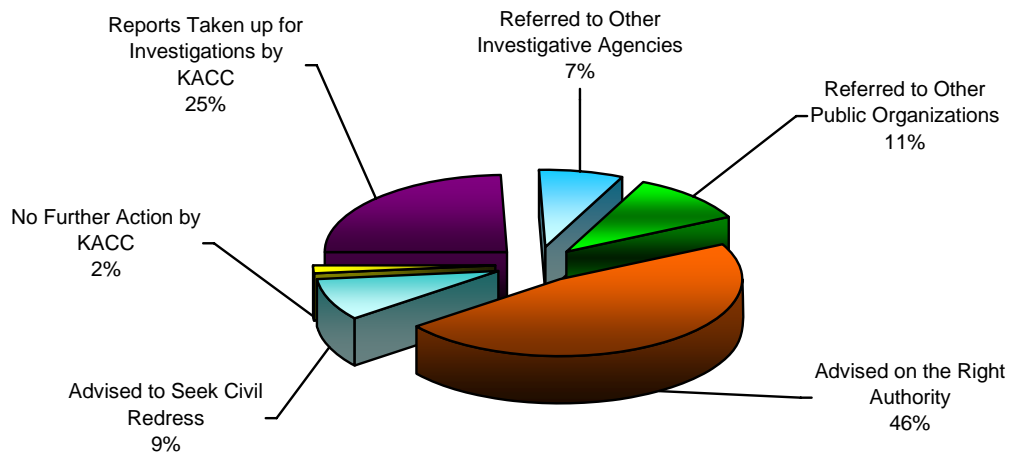
- The Commission took up for investigation **44 reports** found to be within our mandate. The Intelligence Production Department accounted for **24** of the cases. The Rapid Response Division took up **19** cases for investigation while Forensic Investigation Department took up the remaining **1** case.

- **13** cases were forwarded to other investigative agencies for action- with the Criminal Investigations Department accounting for **3**, Police **3**, KRA **5** and the Immigration Department **2**.

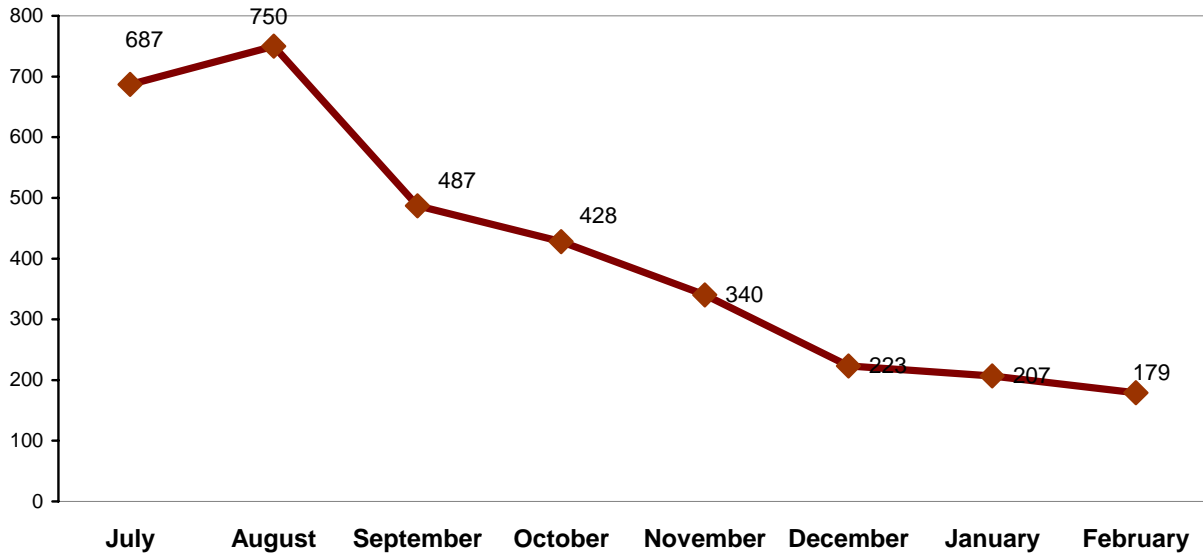
	<b>Category</b>	<b>Referral Agency</b>	<b>No. of cases</b>	<b>Total</b>
1	<b>Reports taken-up for action by KACC</b>	KACC - Intelligence Productions	24	<b>44</b>
		KACC – Rapid Response	19	
		KACC – Forensics	1	
2	<b>Reports Forwarded to Other Investigative Agencies</b>	General Duty Police	3	<b>13</b>
		Criminal Investigations Department	3	
		Kenya Revenue Authority KRA	5	
		Department of Immigration	2	
3	<b>Reports Forwarded to Other Public Service Organisations</b>	Ministry of Education	7	<b>19</b>
		Ministry of Agriculture	1	
		Provincial Administration	1	
		Ministry of Finance	2	
		Ministry of Health	2	
		Ministry of Home Affairs - NYS	1	
		Ministry of Roads and Public Works	1	
		Other Public Organisations	4	
4	<b>Advised to Pursue the Matter in Court</b>			<b>16</b>
5	<b>Advised on the right authority to report matter to</b>			<b>84</b>
5	<b>Complainants to Avail More Information</b>			<b>0</b>
6	<b>No Further Action by KACC</b>			<b>3</b>
<b>Total</b>				<b>179</b>

- **19** cases to various public service organisations for administrative intervention,
- in **16** cases the complainants were advised to seek civil redress,
- in **84** cases the complainants were advised on the right authority to report to and
- **3** after analysis were recommended for No Further Action

## Categorization of reports Processed by KACC in February 2008



## Comparative Analysis Showing the Cases received for the past 8 months.

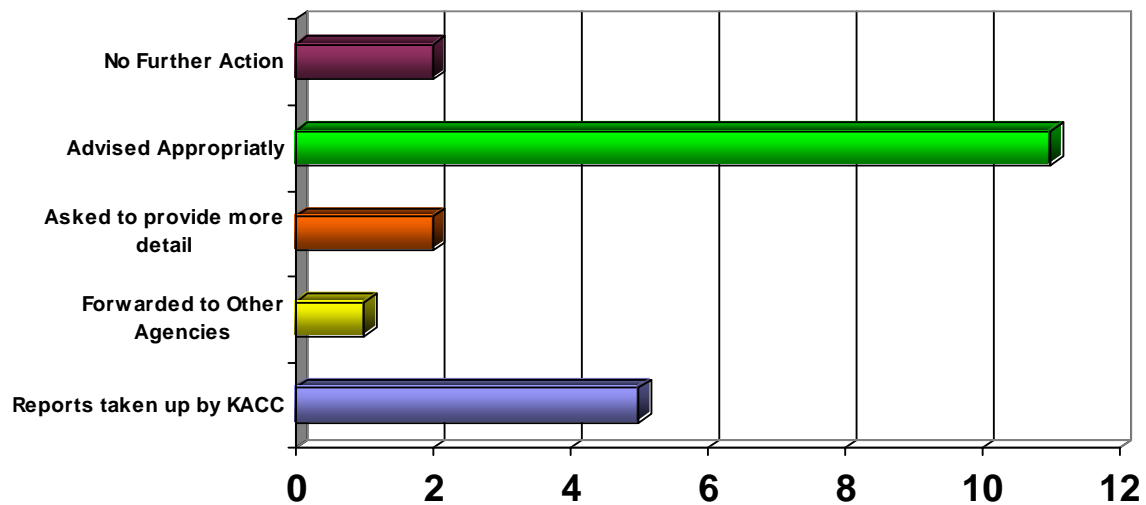


## Report Centre - Mombasa

In the month of **February 2008**, the Centre (Mombasa Regional Office) processed a total of **21** new reports. Following is the breakdown and the manner of disposal after analysis:

## Graphical Representation of Cases Processed

	Category	Referral Agency/Department	No. of cases	TOTAL
1	Reports taken-up for action by KACC	KACC - Intelligence Production	2	5
		KACC – Rapid Response	2	
		KACC - Forensic Investigations	1	
2	Reports Forwarded to Other Investigative Agencies	Provincial Police Officer (PPO) Coast	1	1
3	Other Public Organisations	Provincial Labour Office	1	1
4	Asked to provide more detail			1
5	No Further Action			2
6	Advised on the right authority to report matter			11
<b>TOTAL</b>				<b>21</b>



## Forensic Investigation – Nairobi

### Summary of Cases as at 29<sup>th</sup> February 2008

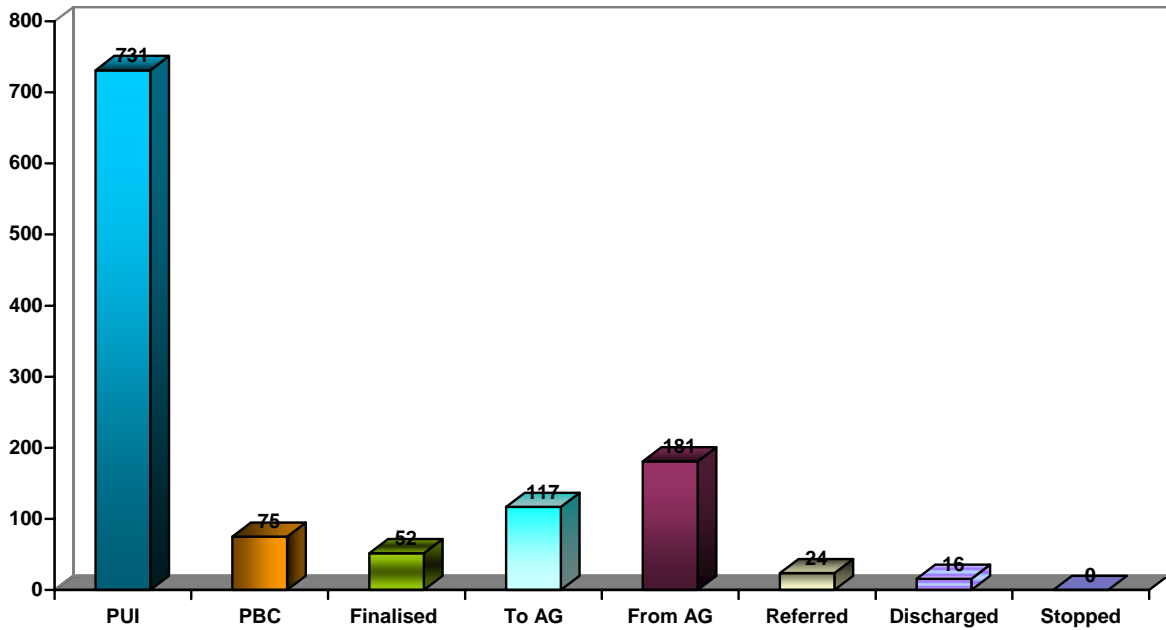
Item	Description	No. of Cases	
		Segment	Total
1.PUI	Cases Pending Investigation	440	<b>731</b>
	Completed Files with the Crime Reader	10	
	Cases Pending Allocation for Investigation	281	
2.PBC	Cases Pending Before Court (PBC)	73	<b>75</b>
	PBC with Part Discharges	1	
	PBC With Prohibition Orders	1	
<b>3.FINALISED</b>	<b>Cases finalised before court:</b>		
	- Convictions	12	<b>52</b>
	- Acquittals	8	
	- Discharges	32	
	- 'Nolle prosequi'	-	
<b>4. To A-G</b>	<b>Files Sent to A-G</b>		
	With Recommendation to Prosecute	57	<b>117</b>
	With Recommendation for Closure	53	
	With Recommendation for Administrative Action	6	
	After Further Investigation	1	
<b>5. From A-G</b>	<b>Attorney-General Advice</b>		
Advice	- To Prosecute	28	<b>181</b>
	- For Closure	86	
	- For further Investigation	11	
	- Administrative Action	52	
	- Consolidated Files	4	
<b>6.REFERRED</b>	Cases Referred to Other Agencies	24	<b>24</b>
<b>7.DISCHARGE</b>	Discharges under s. 87(a) for New Charges	<b>16</b>	<b>16</b>
<b>8.STOPPED</b>	PUI Cases stopped by Court injunctions	1	<b>1</b>

## CASE OUTPUT FOR THE MONTH OF FEBRUARY 2008

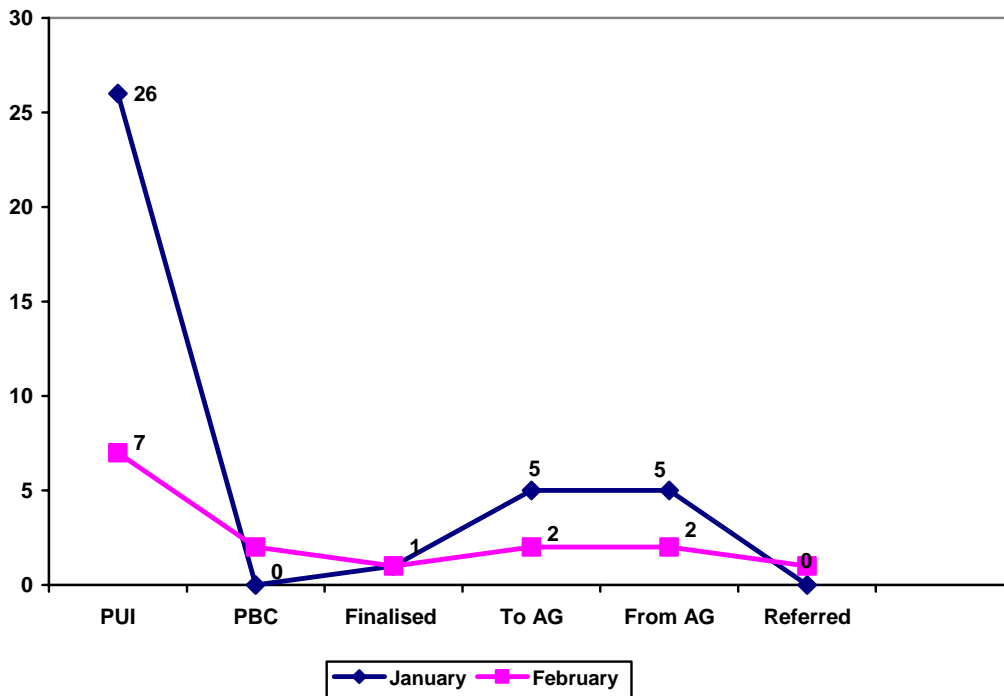
Item	Description	No. of Cases	
		Segment	Total
<b>1.PUI</b>	<b>Cases Pending Investigation</b>		
	Cases Received for Investigation	4	<b>7</b>
	Cases Assigned for Investigation	2	
	Completed Files Forwarded to Crime Reader	1	
<b>2.Pbc</b>	<b>Cases Taken to Court:</b>		
	- Cases Taken for Plea	2	2
<b>3.Finalised</b>	<b>Cases Finalized Before Court:</b>		
	- Convictions	-	1
	- Acquittals	1	
	- Discharges	-	
	- 'Nolle prosequi'	-	
<b>4.TO A-G</b>	<b>Files sent to the Attorney-General:</b>		
	- With Recommendation to Prosecute	1	<b>2</b>
	- With Recommendation for Closure	1	
	- With Recommendation for Administrative Action	-	
<b>5. From A-G</b>	<b>Files Received from the Attorney-General</b>		
<b>Advice</b>	To Prosecute	1	2
	To Close Due to Insufficient Evidence	1	
	For Administrative Action	-	
	For Further Investigation	-	
	For Consolidated	-	
<b>6.REFERRED</b>	Cases Referred to Other Agencies	1	1
<b>7.REPORTS</b>	Investigation Reports Prepared For Action	-	

\* Bribe demand cases not included.

## Graphical Representation of the Cases as of February 28<sup>th</sup> 2008



## Comparative Analysis of Cases processed in January 2008 and February 2008





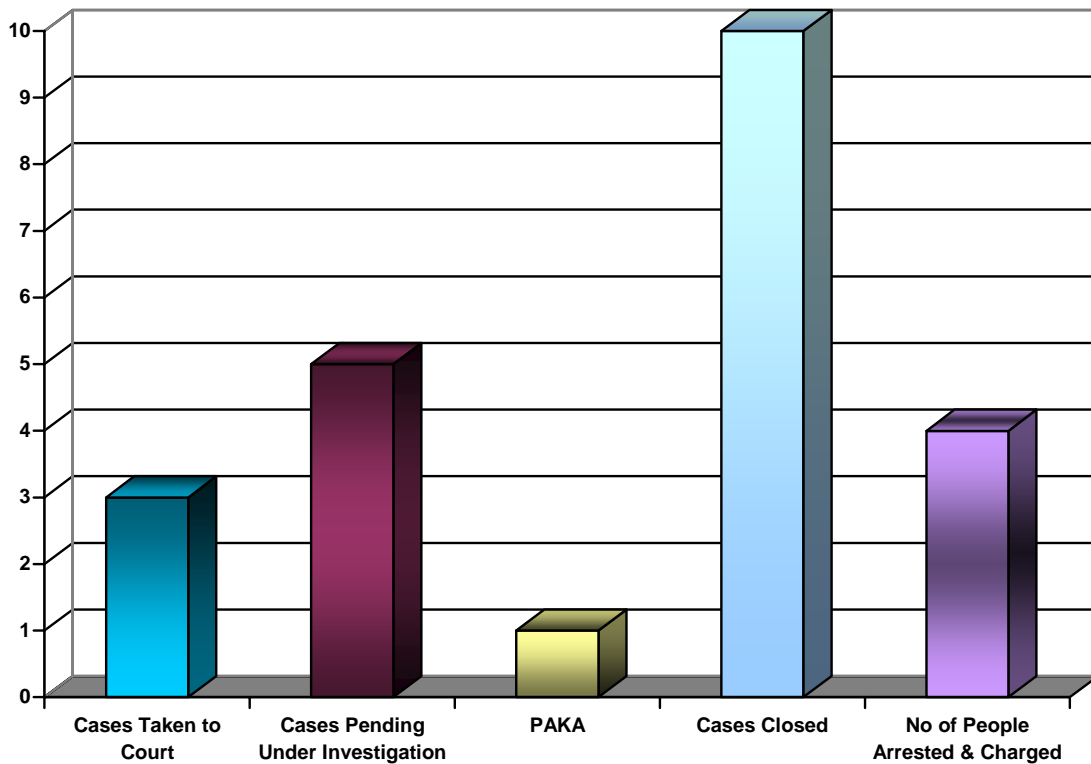
## Rapid Response – Nairobi

### Summary of Cases Received

Below is a tabulation of the number of cases handled by the department during the month under review and the respective status;

Category		Status	No. of cases
1	Bribery	Number of cases taken to court	3
		Cases pending under Investigations	5
		PAKA	1
		Cases Closed, No Further Action	10
<b>TOTAL</b>			<b>19</b>
Number of persons arrested and charged			<b>4</b>

### Graphical Representation of the cases processed.



## Rapid Response – Mombasa

The Division received a total of 2 reports.

## Intelligence Production – Nairobi

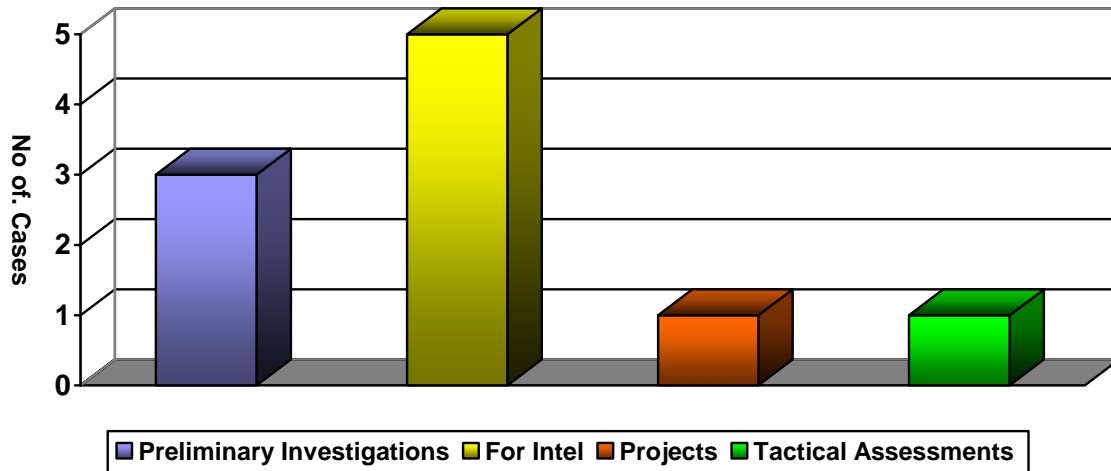
### Reports

Intelligence Production Department received 10 cases during this period and they were distributed to the relevant divisions as follows:-

### Breakdown

	Description	Division and	No of Reports
1	Divisions	Preliminary Investigation	3
		For Intelligence Development	5
2	Projects	LATF/CDF project	1
<b>Total Reports Received</b>			<b>9</b>
4	Tactical Assessments	Kenya Sugar Board	1

### Graphical Representation of the cases received



## Distribution of cases taken up by Intelligence and Production Department

The table below indicates the status of cases received and taken up for investigations by the divisions.

### *Preliminary Investigations*

<b>Case Status</b>	<b>No of Reports</b>
Total number of Cases received for PI	3
Cases under preliminary Investigation	2
Total number of Cases Completed	6
Completed cases recommended for closure	4
Completed cases forwarded for full Forensic Investigation	1
Cases referred to Legal department	1

### *Covert Operations*

<b>Case Status</b>	<b>No. of Reports</b>
Self-generated Cases	1
Number of cases completed	1
Number of cases recommended for Closure	2

### *Special Desks*

<b>Desk</b>	<b>Case Status</b>	<b>No. of Reports</b>
CDF / LATF and RMLF	Total Cases Received	1
	Cases Recommended for Closure	1

### *Target study and Risk Analysis*

Project General	Total Target study and Risk Analysis Initiated	9
	Completed Target Study and Risk Analysis	8
	Ongoing Target Study and Risk Analysis	1